

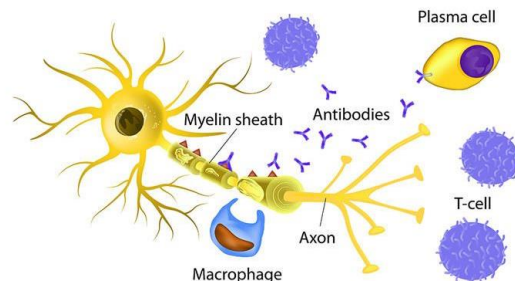
Café Scientifique Headingley

Monday 9th October 2017 at 7:30pm

Predicting & Preventing Autoimmune Disease

- The Ultimate Panacea?

by Paul Emery & Kulveer Manika



Outline: Autoimmune diseases affects up to a fifth of the population of the western world. Over the last few years have led to a better understanding of the pathogenesis of these diseases and has revealed these are not all-or nothing disorders and people at-risk can be identified before the disease has developed. Rheumatoid arthritis has been the model and individuals can be initially identified to be at-risk on the basis of their genes and their environment, then subsequently by disordered immunity, diagnosed with a blood tests and finally by imaging abnormalities. There is now good evidence that the first detectable abnormalities in the immune system occur particularly in the mouth and the lungs. We will discuss the “continuum of disease” and strategies to identify people at risk and quantify the risk of progression. We will also highlight the latest research on the role of infection and interventions which have the opportunity to prevent progression and possibly reverse the process.

Biogs: *Dr Kulveer Mankia* - qualified in medicine from Magdalen College, Oxford and undertook general medical training as a NIHR academic clinical fellow at the John Radcliffe Hospital. Basic science research in molecular imaging of early inflammation was carried out as part of this fellowship. He is now a specialist registrar in rheumatology and general internal medicine and a clinical research fellow at the Leeds Institute of Rheumatic and Musculoskeletal Medicine and Leeds Biomedical Research Centre where he was awarded the Overend Throup Scholarship. His research interest is the preclinical phase of rheumatoid arthritis and he is investigating periodontal disease, mucosal autoimmunity and imaging in at-risk individuals and palindromic rheumatism.

Professor Paul Emery - is the Arthritis Research UK Professor of Rheumatology, Director of the Leeds Institute of Rheumatic and Musculoskeletal Medicine, University of Leeds, and Director of the Leeds Biomedical Research Centre at Leeds Teaching Hospitals Trust. He trained at Cambridge, Guy's, Brompton before academic posts in Melbourne and Birmingham. He was President of the European League Against Rheumatism (EULAR) from 2009 to 2011 and was inaugural President of the International Society of Extremity MRI in Rheumatology. Prof Emery has been the National Institute Health Research Senior Investigator since 2009 and was a recipient of the Roche Biennial Award for Clinical Rheumatology; the Rheumatology Hospital Doctor of the Year Award for 1999; and EULAR prize for outstanding contribution to rheumatology research for 2002. In 2012 he was awarded the Carol Nachman Prize, the top international rheumatology award. He has published >1000 peer-reviewed articles on the immune system and rheumatoid arthritis, spinal arthritis, psoriatic and connective tissue diseases.

Venue: The New Headingley Club, 56 St Michael's Rd., Leeds LS6 3BG

Time: Club opens at 7:00pm for drinks & the room at 7:30; talk begins promptly at 7:45pm

Entry: Donation please for room hire and expenses: **£3 at the door**



Café Scientifique Headingley is a programme run under the auspices of the Headingley Development Trust www.headingleydevelopmenttrust.org.uk